

4 The number of coats

- The number of coats you need will depend on the type of paint you use and what you're painting over. Follow the instructions on the tin for the best results.
- If you're painting over a dark colour or a pattern, you could need up to 3 or 4 coats of emulsion to cover it up. Make sure you leave the paint to dry between coats. 'One coat' emulsion may be a better option so long as the colour contrasts are not too great.

5 Cover your furniture and floor

- Cover floors and furniture with dustsheets. And make sure you've got a bucket of water and a sponge to wash off any splashes.

6 What to paint first

- Paint your ceiling first, then the walls and lastly the woodwork.

7 Brushes

- For your first coat of primer or base coat follow the instructions on the tin.
- Half fill a paint kettle with your paint and dip in a 50mm brush about one-third the way up the bristles.
- Hold your brush at 90 degrees to the ceiling and paint a straight line across the corner between the walls and ceiling (**fig.1**).
- Turn your brush parallel to the ceiling and carefully go over the first stroke, keeping the bristle close to the ceiling but not touching it (**fig.2**). Repeat this along the bottom and tops of your walls.
- You can then use a bigger brush to fill in the rest. Use the edge of your brush to cut into the corner of your wall (**fig.3**), and then paint outwards in a criss-cross fashion. Lastly, lightly brush out the paint in long strokes.

TERRY'S HANDY TIP

Keep your paint tray clean by using the paint tray inserts that we sell in store before you put the paint in. Then carefully remove it and throw it away once you've finished. Your tray will be completely clean.

8 Rollers

- Fill your paint tray a third of the way with emulsion. Dip your roller in and roll it firmly up and down the ribbed section (**figs.4 and 5**). Make sure you don't get too much paint on your roller, it should roll freely over your walls or ceiling, without slipping or skidding.
- Slow vertical strokes will cut down spattering – and should be finished off with parallel strokes in one direction. Apply the paint evenly and always work from a wet edge to avoid ridges.
- For the best results work on 1m square sections at a time.
- Use a 50mm brush to paint into the corners.
- A long handle extension on your roller will make painting your ceiling a lot easier.

9 Paint pads

- Use a large pad for the walls and ceilings, and a small pad for the edges (**fig.6**).
- Load your pad by drawing it across the captive roller in the special tray (**fig.7**).
- Make sure you keep your pad flat on the wall or ceiling and move it gently in random directions – finishing with long strokes (**fig.8**).

TERRY'S HANDY TIP

If you want to use your paint brushes or rollers the following day, try wrapping cling film round them, it will stop the paint from drying up & keep their shape.

Just the job

Get the right tools at the right price.



Any products not available in store can be ordered via customer services

wilkinson

Your guide to... painting walls and ceilings

Skill rating:
easy
Should take:
about a day

HANDY ADVICE

Getting it covered



Terry, the DIY genius

This simple guide shows you how to paint walls and ceilings. It helps you choose the right type of paint and brushes for you, and gives you advice on preparing and painting your walls and ceilings.

Remember! When undertaking DIY tasks you must always take your own ability into account and you must also read and follow any packaging and manufacturers' instructions. This leaflet is intended to be a basic guide only and is not a substitute for any professional advice.

1 Make sure you choose the right paint

- The best paint for internal walls and ceilings is emulsion.
- There are three main types of emulsion you can choose from – each one gives you a slightly different finish.

VINYL SILK

- This has a shiny finish and is the hardest wearing of all the emulsion paints. It's ideal for rooms that have a lot of moisture and condensation. Some manufacturers also make special kitchen and bathroom paints which are designed for rooms which get steamed up.

VINYL SOFT SHEEN

- This gives a subtle soft sheen and is more hardwearing than vinyl matt. It's great for walls that might need lightly washing down or sponging occasionally.

VINYL MATT

- This gives a non-shiny, matt finish that doesn't show up any imperfections on the wall. This is because shinier finishes reflect back more light and highlight any bumps or dents on the wall. On the down-side, vinyl matt emulsion might not wear as well as the more glossy emulsions.

TERRY'S HANDY TIP

Most paint changes colour as it dries. If you've picked a colour from a manufacturer's colour card, don't be alarmed if the paint looks darker when you apply it. It will dry to the correct colour. Try painting a small area and see if the colour looks right on your wall before you paint the whole wall!

2 Choosing your tools

PAINT BRUSHES

- These are usually made from bristle or synthetic fibres which are set into resin or vulcanised rubber. The bristle, hair or fibres should be flexible, thick and smooth to the touch, and not come out of the handle too easily.
- 4-6 inch wall brush – a wide brush for painting large, flat surfaces like walls and ceilings.
- 2 inch wall brush – an ideal size for painting smaller flat surfaces like tricky bits of wall and woodwork including doors and skirting boards.
- 1 inch brush – a smaller brush for doing close to the edges of walls and ceilings, as well as mouldings and doorframes.
- 1/2 inch brush – a narrow brush for tight areas and fine detail on window frames.
- Cutting-in – a small brush with angled bristles for painting near to edges and into tight corners. Also good for painting window frames.

ROLLERS

- Rollers are really quick and easy to use, applying paint three times faster than a brush. They come in a whole range of widths and weights. Roller sleeves too offer a choice of fabrics, depending on the paint and surface you're painting. The manufacturer's packaging will help you pick the right sleeve for your painting job.

PAINT PADS

- These come in a variety of shapes and sizes (**fig.6**). They have a rectangular sponge face covered in a short mohair pile. This is fixed to a rigid plastic back which usually has a removable handle. Paint pads are great for smooth surfaces, but can get caught and snag if the surface is uneven.
- Brushes and paint pads can give a better finish on textured surfaces than a roller.

3 Getting walls and ceilings ready

- Before you start painting make sure your walls and ceilings are clean, dust free, smooth and completely dry. Give them a good wash down with sugarsoap, then a rinse with clean water.
- If you've got new plasterwork, check and remove any blisters, fill any cracks or blemishes and rub off any fluffy patches with a rough cloth.

PRIMING BARE PLASTER

- If you're using oil based paint, you'll need to treat your plaster with a suitable primer.
- If you're using emulsion use one of the specially designed base coats.
- You can also use emulsion over most wallpapers, so long as they are in good condition and firmly stuck down – but bear in mind if it's a textured paper then the texture will show through the paint.

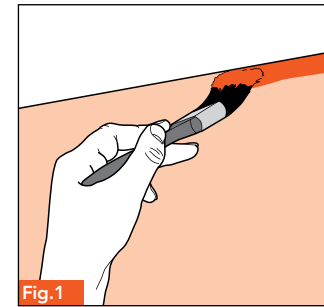


Fig.1

Hold your brush at 90 degrees and paint the line where the wall meets the ceiling.

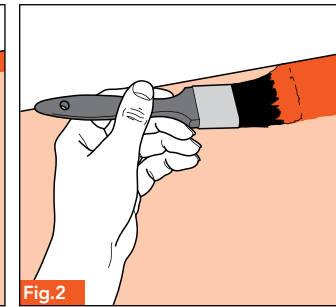


Fig.2

Turn the brush and go over the first stroke again, making sure you don't touch the ceiling.

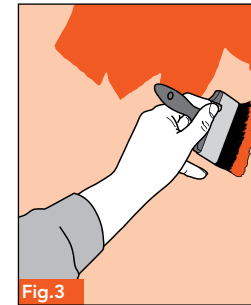


Fig.3

Use a large brush to cover the rest of the wall and ceiling.

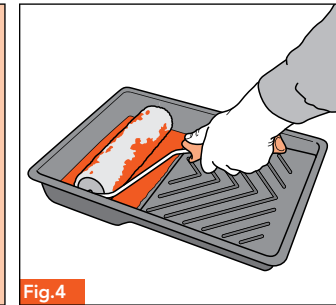


Fig.4

Fill your paint tray about a third full with emulsion. Dip your roller and roll it firmly up and down the ribbed 'platform'.

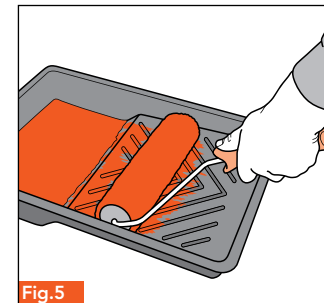


Fig.5

Don't overload your roller. It should roll freely over the surface of your wall - not skid.

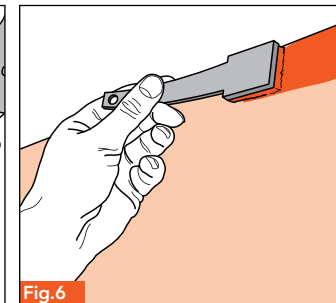


Fig.6

Use a 200mm pad for walls and ceilings, and a 30-50mm pad for edges.

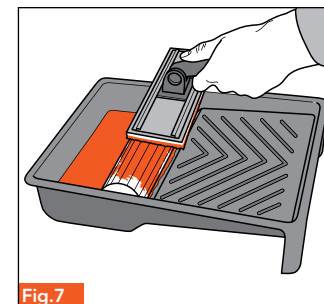


Fig.7

Load your pad by drawing it across the roller.

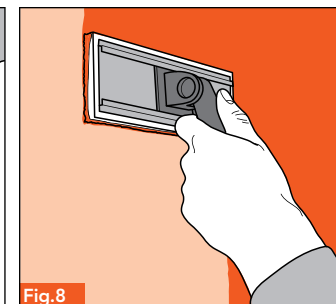


Fig.8

Keep the pad flat and move it gently in random directions - finishing with long strokes.